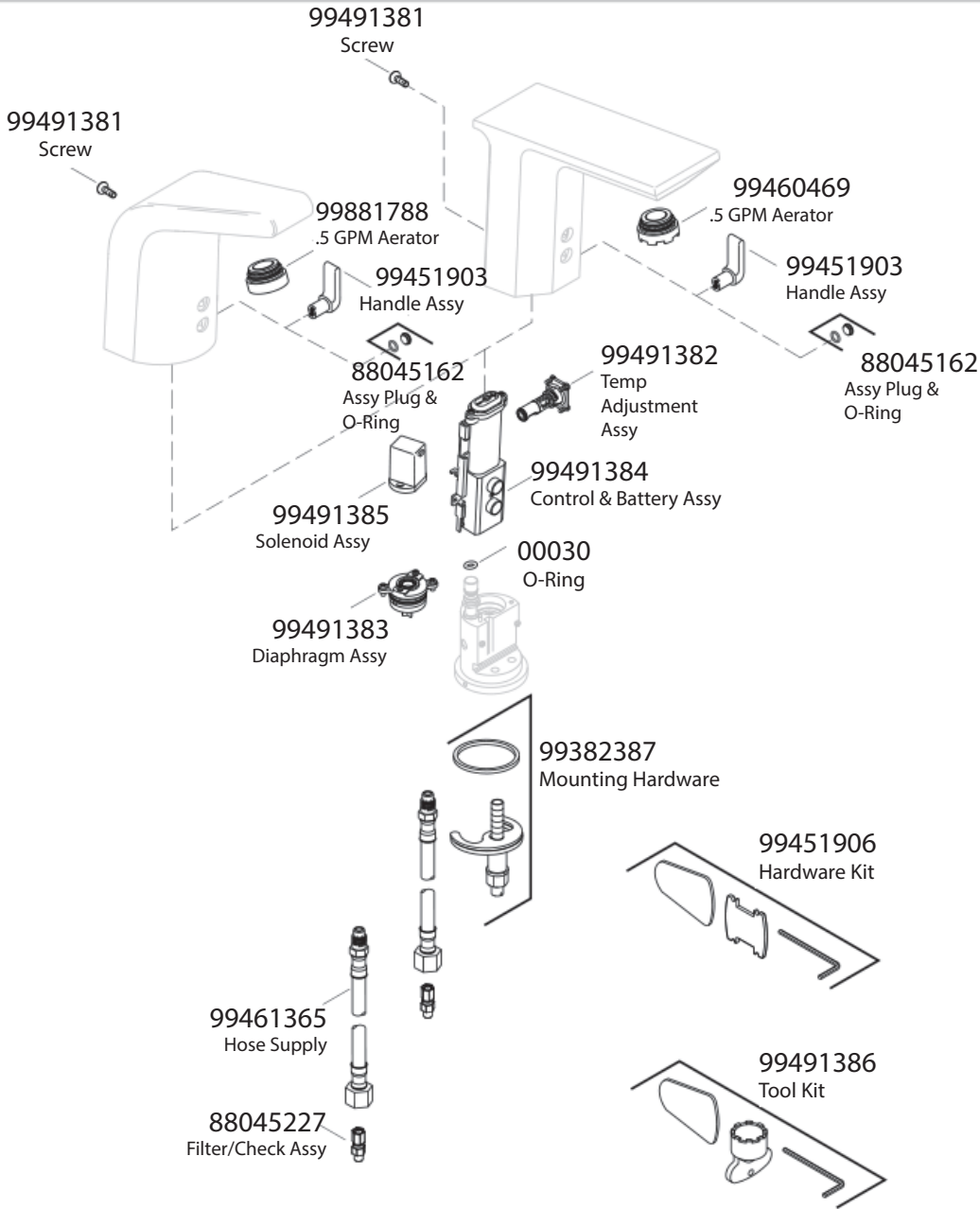




Sculpted single-hole Touchless DC-powered commercial bathroom  
K-13460-CP



**Troubleshooting (cont.)**

Symptoms	Probable Causes	Recommended Action
	<b>K.</b> Solenoid is not working.	<b>K.</b> Order a new solenoid service kit.
<b>2.</b> Low flow.	<b>A.</b> Filter is plugged. <b>B.</b> Supply pressure is low. <b>C.</b> Aerator is plugged.	<b>A.</b> Clean or replace the filter. <b>B.</b> Check incoming water pressure. Pressure should be at least 20 psi (137 kPa). <b>C.</b> Remove the aerator and clean it. For calcium/mineral deposits, soak the aerator plastic insert in a 50:50 mixture of vinegar and water. Soak only the insert and no other components.
<b>3.</b> Constant water flow.	<b>A.</b> Filter is plugged. <b>B.</b> Diaphragm seal is damaged or dirty. <b>C.</b> Solenoid is not working.	<b>A.</b> Clean or replace the filter. <b>B.</b> If the diaphragm is cut or torn, order a new diaphragm assembly. Clean or replace the diaphragm. <b>C.</b> Order and install a new solenoid assembly.
<b>4.</b> Sporadic water flow.	<b>A.</b> The faucet is angled incorrectly to deck or misaligned with user area. <b>B.</b> The wires are pinched or damaged.	<b>A.</b> Verify that the faucet is mounted according to the installation directions. Ensure that the faucet is installed in a position that is above the rim of the sink. <b>B.</b> Remove the spout and verify that the wires are tucked inside the spout before reassembling.
<b>5.</b> Sensor flashes once approximately every 2 seconds. The product continues to operate.	<b>A.</b> The battery power is low.	<b>A.</b> Remove faucet from body and replace batteries. Use two standard AAA batteries.
<b>6.</b> Sensor flashes once approximately every 2 seconds. The product does not operate.	<b>A.</b> The battery power is insufficient to allow the product to operate.	<b>A.</b> Remove faucet from body and replace batteries. Use two standard AAA batteries.